

The Granite Belt 🐾



# DOG-FRIENDLY PASSPORT

Sip 🐾 Stay 🐾 Dine 🐾 Explore

YOUR GUIDE TO DOG-FRIENDLY ADVENTURES

*across the Granite Belt*



DOG-FRIENDLY  
WINERIES



CAFÉS &  
DINING



WALKS &  
ATTRACTIONS



LOCAL TIPS &  
HIDDEN GEMS

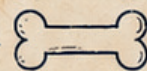


PROUDLY PRESENTED BY

**COUNTRY STYLE**  
HOLIDAY PARK



YOUR PASSPORT TO  
UNFORGETTABLE  
ADVENTURES TOGETHER



STANTHORPE • BALLANDEAN • GLEN APLIN • THE GRANITE BELT

*Collect memories,  
not paw prints!*



# Welcome

## TO THE GRANITE BELT

### A message from Ben & Narelle

We're Ben and Narelle, and like many of our guests, we believe holidays are best enjoyed with the whole family – including the furry members.

That's why we've created a genuinely pet-friendly holiday experience. Whether it's stretching their legs in our off-leash area, relaxing beside the Severn River, meeting our friendly farm animals or simply enjoying a getaway together in one of our pet-friendly accommodation options, there's plenty here for both you and your four-legged companion.

Over the years we've discovered that the Granite Belt is one of Australia's most dog-friendly holiday destinations. From wineries and cafés to scenic walks and local attractions, there are countless places where your dog is just as welcome as you are.

This Passport has been created to help you discover the very best of the region and make the most of your stay.

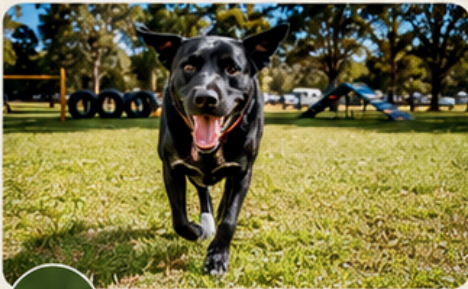
We hope you enjoy exploring the Granite Belt together.

*Ben & Narelle Beadel*

COUNTRY STYLE HOLIDAY PARK



### WHY PETS LOVE STAYING WITH US



Large Off-Leash Dog Area



Pet-Friendly Cabins Available



Meet & Feed Our Friendly Goats & Sheep



Easy Access to the Severn River



Relax Around Our Communal Firepit



Located in the Heart of Granite Belt Wine Country



### WHAT YOU'LL DISCOVER INSIDE



DOG-FRIENDLY WINERIES



DOG-FRIENDLY DINING



WALKS & ATTRACTIONS



LOCAL HIDDEN GEMS



PLACES YOUR DOG WILL LOVE



# Paws, Paths & Great Days Out

We've sniffed out some pawfect dog friendly spots, making it easy to plan your trip to Stanthorpe, Ballandean and surrounds to have a ball in wine country with your fur baby.



Country Style  
HOLIDAY PARK



## DOG-FRIENDLY WINE TOURS

### FILIPPO'S TOURS

Filippo's Tours welcomes four-legged guests to take a seat on their wine tours. Their minibus is available especially to cater for tours with dogs with a doggie bed built into the seating plan of the vehicle! Contact Filippo's Tours to book your dog friendly wine tour.



## EXPLORE TOGETHER

### DONNELLY'S CASTLE

The perfect spot to discover giant granite boulders, squeeze through natural rock passages and explore the famous bushranger hideout. A great dog-friendly alternative to Girraween National Park.

### SENTIMENTAL ROCKS

An easy bush walk on the edge of Stanthorpe showcasing the region's famed granite boulders. A great alternative to Girraween National Park and perfect for a morning stroll.

### QUART POT CREEK & RED BRIDGE

Kilometres of walking paths follow the creek winding right through Stanthorpe township. Off-leash areas are accessed from Connor Street between Talc Street and Britannia Street, or Allison Street, off Archibald Street. Continue to The Red Bridge at one end of town.

### MT MARLAY LOOKOUT

Up the short steep winding road for amazing views of the town. At the top find free mounted binoculars and take a short walk around the summit for even more spectacular scenery.

### BALLANDEAN PYRAMID

This man-made granite pyramid is a unique local landmark just outside Ballandean. Viewable from the roadside and worth the stop while exploring the southern Granite Belt.



## BREWERIES & LOCAL SIPS

### GRANITE BELT BREWERY

Sit outdoors to enjoy an ale or two with your best pal by your side on their spacious rear deck. Soak up the beautiful surroundings while enjoying a delicious meal or a refreshing drink.



### CASTLE GLEN AUSTRALIA

For a spot that has liqueurs, wine, beer and many more heavenly Granite Belt made liquids onsite, drop in to dog-friendly Castle Glen Australia. Forget the dog house, this is a castle where dogs are welcome to play around on the large grassy area out front, plus small, well-behaved dogs are welcome inside.



### Ballandean Pyramid

A unique local landmark and a must-see curiosity in the Granite Belt.



### Quart Pot Creek & Red Bridge

Scenic walks, beautiful waterways and plenty of spots to enjoy together.



### Eastern Colour Farm

Pick your own apples and strawberries with your furry friend by your side.



## Local Tip

Many of these attractions are within a short drive of Country Style Holiday Park, making them perfect for a day out with your furry friend.





# Dog-Friendly WINERIES & CELLAR DOORS

One of the things that makes the Granite Belt so special is just how many wineries welcome four-legged visitors. Whether you're looking for a long lunch, a relaxed tasting or a vineyard afternoon, there's no need to leave your best mate behind.



*Dogs Welcome Inside* These wineries allow dogs inside the cellar door, making them perfect for cooler days or if your furry friend prefers to stay by your side.



## RIDGEMILL ESTATE

Dogs are welcome inside the cellar door and pet-friendly cabins are available amongst the vines. Gourmet local produce, preserves and deli-style items are available for purchase – perfect for creating a picnic during your Granite Belt adventures.



GOURMET  
PRODUCE  
FOR SALE



## SUMMIT ESTATE

A favourite for dog lovers, Summit Estate even offers a *Fur Babies Menu* featuring Puppuccinos and Barkuterie Boards. Relax on the lawn with bean bags overlooking the vineyard.



FUR BABIES  
MENU



## HERITAGE ESTATE

One of the Granite Belt's most unique food and wine experiences. Enjoy the famous Vine+Dine Journey, grazing platters, degustation dinners and special events.

*Small dogs welcome inside. Larger dogs welcome on verandahs and in the fenced old school yard.*



FOOD & WINE  
EXPERIENCES



## MOUNTVIEW WINES

Dogs are welcome both inside and outside the cellar door. Pet-friendly cabins and camping are also available.



CABINS &  
CAMPING



## ART OF KRUPINSKI

An open-plan cellar door where dogs can roam through most areas. Enjoy traditional Polish pierogi and snacks while tasting wines.



PIEROGI &  
SNACKS



## CASLEY MOUNT HUTTON WINERY

Welcomes visitors with dogs and offers plenty of open countryside around the cellar door.



OPEN  
COUNTRYSIDE



## SERRENA QUE ESTATE

Dogs are welcome inside and may be *off-leash* outside. Water is provided for visiting pooches.



WATER  
PROVIDED



## BALANCING HEART VINEYARD


Dogs are welcome inside and outside. Explore the vineyard walk to the famous heart-shaped balancing rock, enjoy a meal or relax with a wine on the verandah.



MEALS &  
EVENTS




### Before You Visit

 Dogs are generally required to remain on a lead unless otherwise advised.



### Please Note

 Information in this guide is provided as a general reference only. Policies, opening hours and dog-friendly areas may change without notice. We recommend contacting venues directly to confirm current arrangements before your visit.



# Dog-Friendly WINERIES & CELLAR DOORS

OUTDOOR TASTINGS, LONG LUNCHES & VINEYARD VERANDAHS

These wineries welcome dogs in outdoor areas, gardens, verandahs and decks while you enjoy the Granite Belt's famous food and wine.



## Looking for Lunch?



### HIDDEN CREEK WINERY

Award-winning wines, lakeside dining and beautiful vineyard views beneath shady trees.



### GRANITE BELT BREWERY

Enjoy a meal or locally brewed beer on the spacious rear deck with your dog by your side.



### JESTER HILL WINES

Pre-book a grazing platter and relax on the verandah overlooking the vineyard. Say hello to Scooby-Doo the Great Dane and Major the Blue Heeler!



### BALLANDEAN ESTATE

Ask about outdoor seating and vineyard picnic options.



### BANCA RIDGE & VARIAS

Dogs welcome on the verandah by request.



### GOLDEN GROVE ESTATE

Hand-crafted grazing platters featuring estate-grown olives, local cheeses and seasonal delights. Plenty of shady outdoor areas.



Good wine. Great views.  
Best company.



RESTAURANT  
DINING



MEALS &  
DRINKS



GRAZING  
PLATTERS  
(pre-booking)



OUTDOOR  
DINING & PICNIC  
OPTIONS



RESTAURANT  
DINING  
(by request)



GRAZING  
PLATTERS  
(serves 2)



## Cellar Doors Worth Exploring



### ROBERT CHANNON WINES

Resident dog JS Bark loves meeting visitors. Outdoor seating available for wine and lunch.



LUNCH &  
SEATING



### BUNGAVARRA WINES

Dogs welcome on the verandah with full view of the tasting area. Small, well-behaved dogs may be permitted inside.



WINE  
TASTINGS



### RAVENSCROFT VINEYARD

Cheese platters, tea, coffee and soft drinks available for designated drivers. Please book cheese platters in advance. Meet Barney the Maremma and Billie the Border Collie x Wolfhound!



CHEESE  
PLATTERS  
(pre-booking)



### SYMPHONY HILL WINES

Enjoy outdoor wine tastings with your dog on a leash.



WINE  
TASTINGS



### JUST RED WINES

Relaxed, dog-friendly cellar door welcoming dogs on leash.



WINE  
TASTINGS



### PYRAMIDS ROAD WINES

Dogs welcome to be walked around the property on a leash and sit outside the cellar door in the shade.



WINE  
TASTINGS



### TWISTED GUM WINES

Dogs welcome for tastings on the beautiful heritage-style verandah.



WINE  
TASTINGS



### SANCERRE ESTATE – VIEW WINES

Dogs welcome by prior arrangement. Private tastings by appointment.



BY  
ARRANGEMENT

## Meet the Resident Winery Dogs



### SCOOBY-DOO & MAJOR

Jester Hill Wines  
The dynamic duo – Scooby the Great Dane and Major the Blue Heeler!



### JS BARK

Robert Channon Wines  
Resident dog JS Bark is always happy to meet new friends.



### BARNEY & BILLIE

Ravenscroft Vineyard  
Say hello to Barney the Maremma and Billie the Border Collie x Wolfhound!



## Please Remember

Dogs are generally required to remain on a lead unless otherwise advised.



Information in this guide is provided as a general reference only. Policies, opening hours and dog-friendly areas may change without notice. We recommend contacting venues directly to confirm current arrangements before visiting.

# Dog-Friendly

## DINING & LOCAL FLAVOURS

Discover cafés, country pubs, local produce and unique foodie experiences where your furry friend is welcome too.



*Sutton's Juice Factory, Cidery & Café*



### CAFÉS, DELIS & LOCAL PRODUCE



#### SUTTON'S JUICE FACTORY, CIDERY & CAFÉ

A Granite Belt icon famous for its apple pies, cider and local produce. A shaded dog parking area with water is available at the entrance, allowing you to relax nearby while enjoying a meal, coffee or one of their famous desserts.



#### BRINX DELI & CAFÉ

Dogs are welcome in the alfresco dining area outside this quirky Main Street favourite. Perfect for breakfast, lunch, coffee and local treats.



#### LITTLE LARDER

A popular local café offering breakfast, lunch, coffee and sweet treats. Dogs are welcome in the outdoor seating area.



#### ZEST PASTRIES

Known for gourmet pies, pastries and fresh sandwiches. Outdoor tables and a dog bowl make it an easy stop for travellers with dogs.



#### STANTHORPE CHEESE

Enjoy cheese tastings and café dining on the lovely outdoor verandah while your dog relaxes beside you.



#### ASHBERN FARMS

A seasonal favourite for strawberry ice cream, coffee and farm-fresh treats. Dogs are welcome in the outdoor picnic area overlooking the strawberry fields.



#### JAMWORKS GOURMET FOODS CAFÉ & LARDER

Part café, part tasting experience. Sample locally made jams, sauces and relishes before settling into the covered dog-friendly verandah dining area.



#### VINCENZO'S CAFÉ & DELI

Located at The Big Apple, Vincenzo's is open daily for breakfast, lunch and afternoon tea. Dogs are welcome in the outdoor dining area.



### SOMETHING DIFFERENT



#### DEAR VINCENT

One of the Granite Belt's newest cellar doors. Enjoy tastings under the trees or within the rustic open-air cellar door while your dog relaxes nearby. Food trucks rotate throughout the year.



#### THE GINYARD

A unique Granite Belt gin distillery producing locally inspired gins using regional fruit. Dogs on leads are welcome on the covered verandah and you'll also find alpacas nearby.



### PUBS & EVENING DINING



#### BALLANDEAN PUB

A beautifully renovated country pub with dog-friendly beer garden seating. Open daily for lunch and dinner.



#### O'MARA'S HOTEL

Located in the heart of Stanthorpe, O'Mara's welcomes dogs in its beer garden, including sheltered outdoor seating.



#### GIRRAWEEEN COUNTRY INN RESTAURANT

Open daily for breakfast and dinner by pre-booking. Dogs are welcome in designated outdoor areas – just mention your furry friend when making your reservation.

### ➤ A FEW GUEST FAVOURITES ◀



SUTTON'S  
JUICE FACTORY



STANTHORPE  
CHEESE



BRINX DELI



ASHBERN  
FARMS

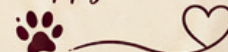


BALLANDEAN  
PUB



THE GINYARD

*Good food,  
great wine and  
happy tails!*



# We've Got YOU COVERED

Local Pet Services & Handy Information

Whether you're looking for a vet, grooming appointment, pet sitter or emergency assistance, here's a handy local guide to pet services around the Granite Belt.



## VETERINARY CARE



### STANTHORPE VET CARE SERVICES

36 Sugarloaf Road, Stanthorpe

(07) 4681 1523

Only a short drive from Country Style Holiday Park, Stanthorpe Vet Care Services provides veterinary consultations, treatment and emergency advice.



### SOUTHERN DOWNS VETERINARY SERVICES

97 High Street, Stanthorpe

(07) 4681 1838

A long-established local veterinary practice providing routine and emergency veterinary care.



## PET SITTING & BOARDING



### STANTHORPE PET SITTERS

0422 406 974

Pet sitting and home visits available throughout the Granite Belt region.



### WE CARE COUNTRY KENNELS

(07) 4683 2518

Boarding kennel facilities available for guests requiring short-term care while exploring the region.



## PET GROOMING



### DOG HYDRO WASH STANTHORPE

0488 516 924



### STANTHORPE PET GROOMING

0458 040 878



### Need More Suggestions?

Reception is always happy to help with:

- Dog-friendly wineries
- Dog-friendly dining
- Walking tracks
- Hidden local gems
- Current event information

Just pop in  
and have  
a chat!

Venues, opening hours and pet policies can change, so scan here to always have the most up-to-date information.

Scan for the  
latest version of this  
Passport



## BEN & NARELLE'S Favourite Dog-Friendly Day



### BREAKFAST

at Brinx Deli



### EXPLORE

Balancing Heart  
Vineyard



### PICNIC

beside  
Quart Pot Creek



### STRAWBERRY ICE CREAM

at Ashbern Farms



### EVENING

around the  
communal firepit  
back at the park



The best days are the  
ones we share together



## PET SUPPLIES & ESSENTIALS

Forgot the dog food? Need treats, poo bags or other pet essentials?

You'll find a range of pet supplies available at:



Woolworths



These stores stock everyday pet food, treats and basic pet care items, making it easy to top up supplies during your stay.

## A FEW HANDY TIPS


- Dogs are generally required to remain on lead.
- Always carry water during warmer months.
- Check directly with venues before visiting as policies can change.
- National Parks do not permit dogs, but there are many dog-friendly alternatives featured in this Passport.






Country Style

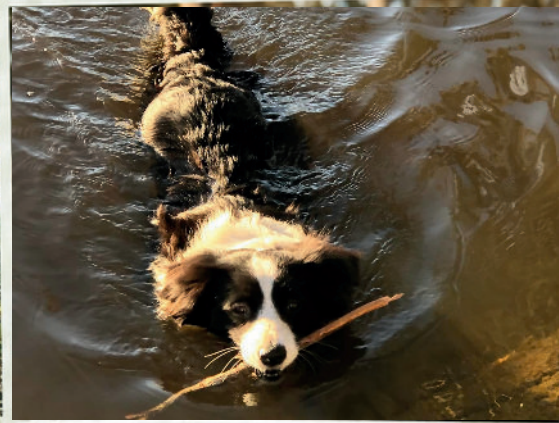
HOLIDAY PARK

Thanks for visiting! 

CREATING HOLIDAYS THE WHOLE FAMILY CAN ENJOY.



  
Country Style  
HOLIDAY PARK  
Splash. Fetch.  
Repeat.



Where tails wag, friendships grow and memories last forever. 



COUNTRY STYLE  
HOLIDAY PARK

Glen Aplin • Granite Belt



(07) 4683 4322



stay@cshp.com.au



cshp.com.au



/countrystyleholidaypark

Scan to visit our  
website for more info  
and the latest updates



 PET FRIENDLY. FAMILY OWNED. LOCALLY LOVED. 